

Existing Site





RETAIL SIGNAL

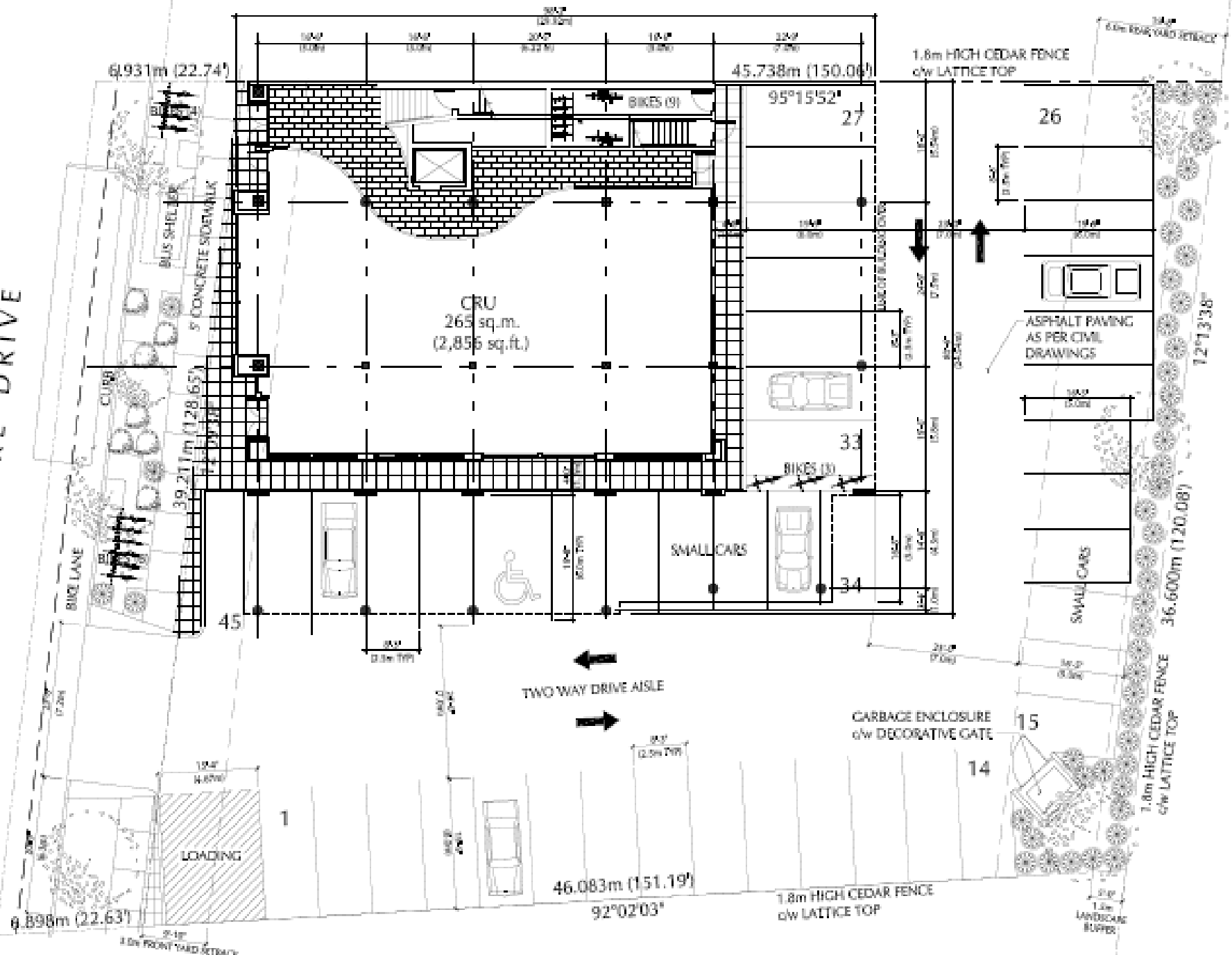
SIGN



RETAIL SIGNAGE

SIGNAGE

LAKESHORE DRIVE



6.931m (22.74')

30' (9.14m)

BIKES (9)

45.738m (150.00')

1.8m HIGH CEDAR FENCE
c/w LATTICE TOP

95°15'52"

26

CRU
265 sq.m.
(2,856 sq.ft.)

39.211m (128.65')

CLUB

BIKES (8)

ASPHALT PAVING
AS PER CIVIL
DRAWINGS

12'13'38"

BIKE LANE

45

SMALL CARS

BIKES (8)

SMALL CARS

36.600m (120.08')

TWO WAY DRIVE AISLE

GARBAGE ENCLOSURE
c/w DECORATIVE GATE

15

14

LOADING

46.083m (151.19')

92°02'03"

1.8m HIGH CEDAR FENCE
c/w LATTICE TOP

6.898m (22.63')

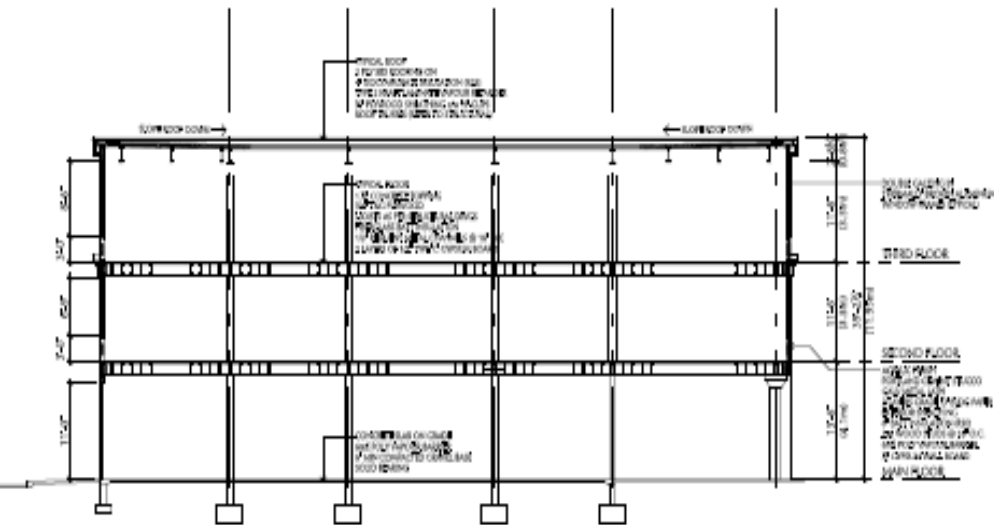
1.0m FRONT YARD SETBACK

1.0m
LANDSCAPE
BUFFER

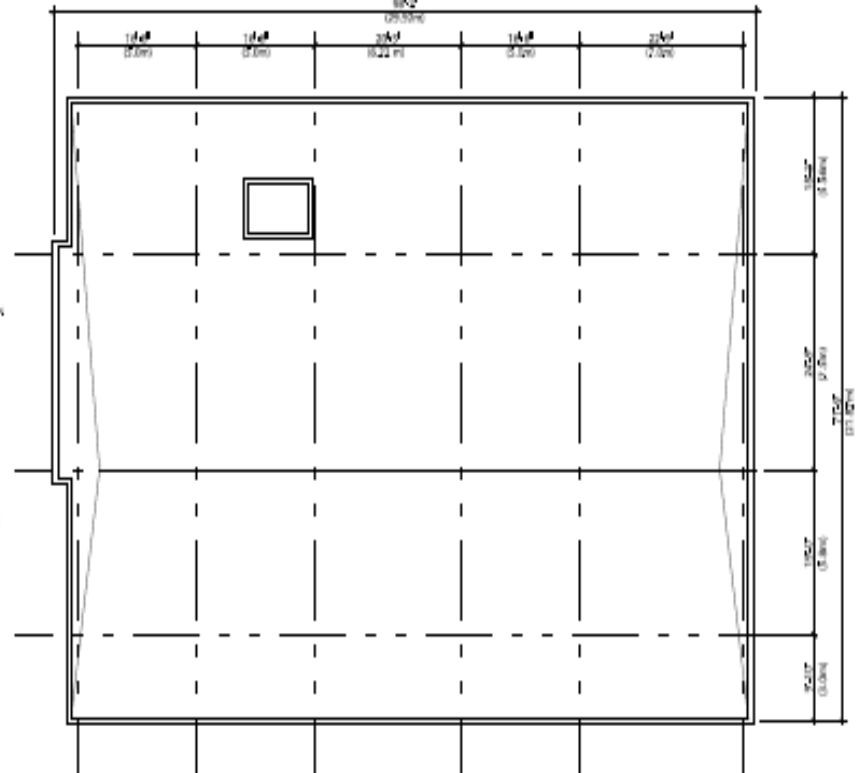


RETAIL SIGNAL

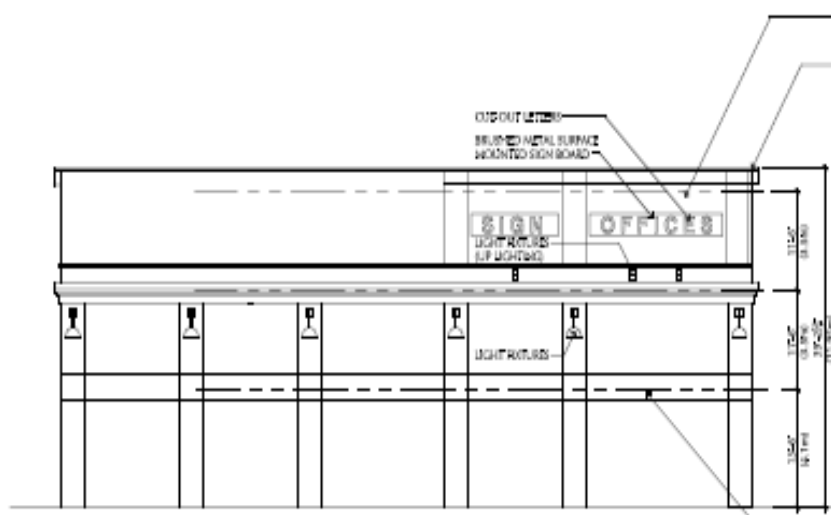
SIGN



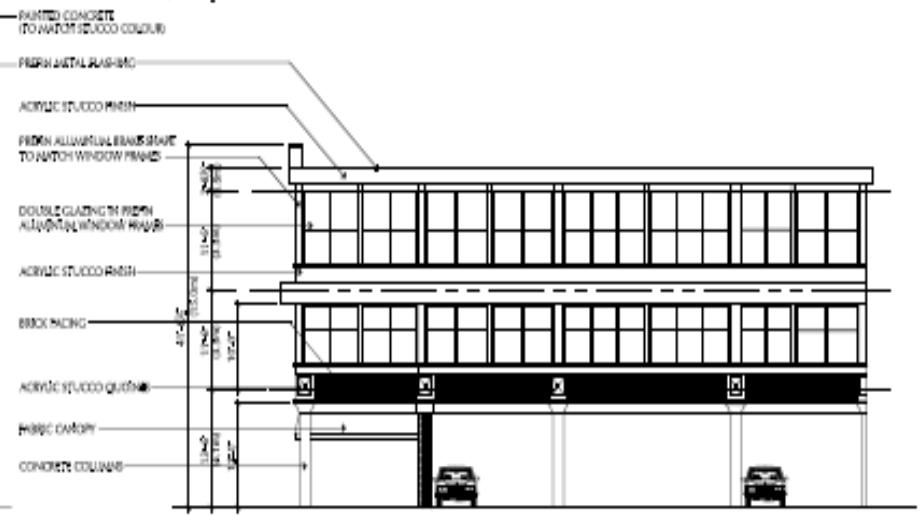
BUILDING CROSS SECTION



ROOF PLAN
(6,877 sq.ft.)

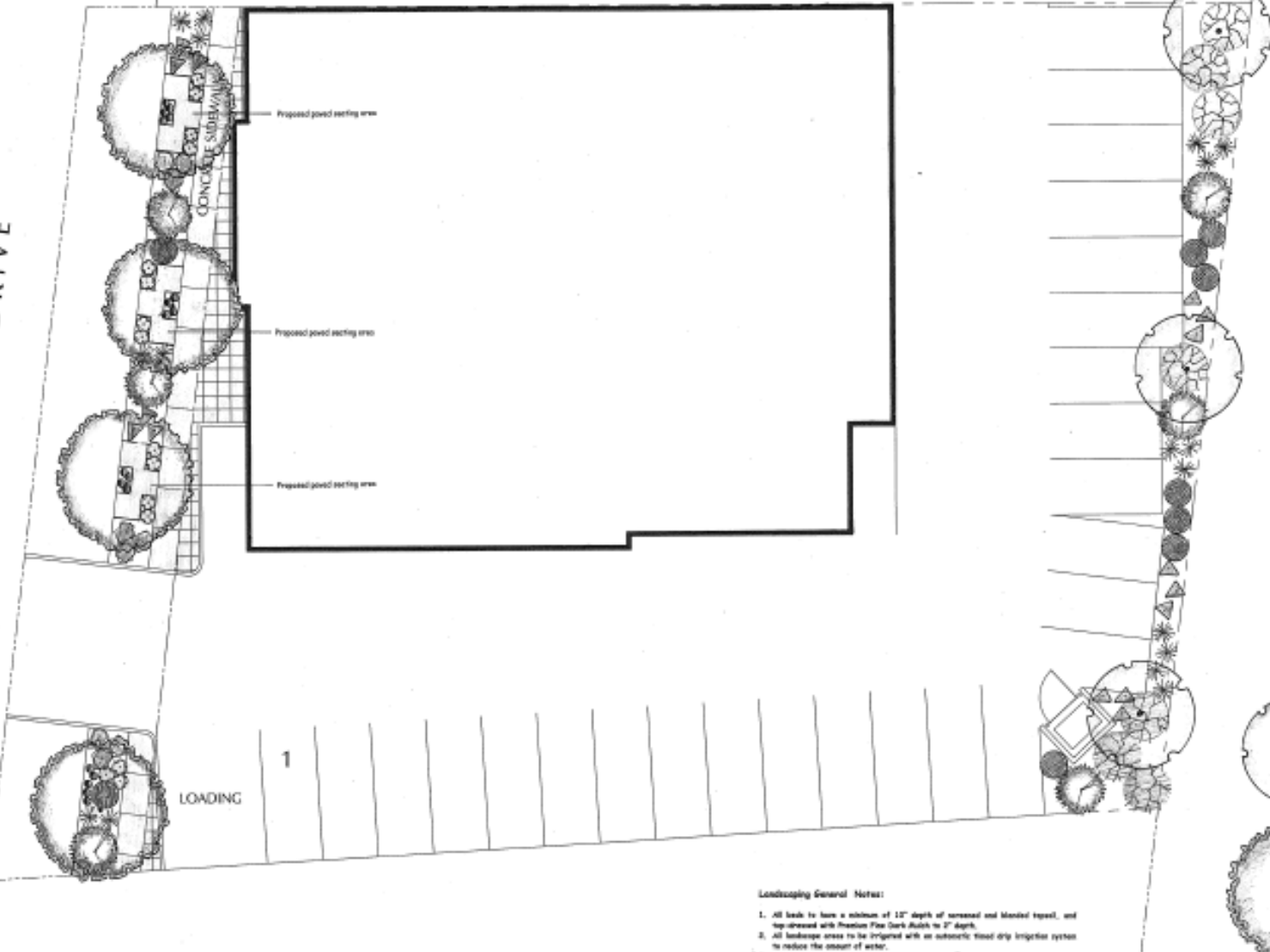


SIDE ELEVATION (NORTH)



REAR ELEVATION (EAST)

LAKESHORE DRIVE



KEY BOTANICAL NAME/COMMON NAME

- Hemerocallis 'Stella d'oro' / Stella d'oro daylily
- Cornus 'Elegant' / Gold / Chantrelle Gold
- Salix 'Yellow River weeper' / Yellow River weeper
- Chamaecyparis 'Karl Foerster' / Blue Spruce
- Persea 'Mildred' / White Persea
- Corynephorus a. glaberrima / Bladder Grass
- Pinus mugo parviflora / Mugo Pine
- Cornus alba 'argentea' / Cornus alba
- Pinus oleracea 'Stenoclar' / Dwarfed Pin Tree
- Thuja occidentalis 'Danica' / 1.5' Dwarfed Arborvitae

Landscaping General Notes:

1. All beds to have a minimum of 12" depth of screened and blended topsoil, and top-dressed with Premium Fine Dark Mulch to 2" depth.
2. All landscape areas to be irrigated with an automatic, timed drip irrigation system to reduce the amount of water.
3. Plant materials and construction methods shall conform to minimum standards established in the B.C. Landscaping Standards published by BCMA and BCMA.

HANS P. NEUMANN ARCHITECT INC.

1525 HIGHLAND DRIVE NORTH, KELOWNA, B.C. V1Y 4G3 PHONE (250) 860-0670 FAX (250) 860-0677

PROJECT: PROPOSED MIXED-USE COMMERCIAL OFFICE BUILDING
 3975 & 3985 LAKESHORE DRIVE
 KELOWNA, BC

DRAWING: SITE / GROUND FLOOR PLAN

NO.	DATE	DESCRIPTION	SCALE
1		ISSUED FOR DEVELOPMENT PERMIT	1/8" = 1'-0"





300

